

7.1.3

Describe the facilities in the Institution for the management of the following types of degradable and non-degradable waste

The college takes initiative and promotes Clean Green campus therefore, proper waste management is imperative. The following are the way in which the college handles the waste

1. Solid waste management- The College is committed to minimize waste. The idea of “*consume less to handle lesser waste*” is the motto with which College handles its waste problem. Awareness programmes, lectures and display slogan boards, etc are the major means to make the Students and staffs aware regarding waste management and practices. The Botany Department and NSS Unit maintains a compost pit where organic leaf manure is generated to sustain the Gardens and greenery around the campus. The compost pit is filled by collecting the fallen and decaying leaves during regular cleaning drive. The Organic waste from College Canteen is collected for making vermicompost. The College also has taken initiative for segregation of degradable and non- degradable waste. Waste is collected daily from various sources and kept in dry and wet waste red and green waste bins respectively. The college adopts proper methods for segregation and management of different types of wastes generated within the campus .Waste materials like plastics are collected weekly by the volunteers of NSS and NCC and are handed over to the Municipal Vehicle. The NSS every year makes plastic Bricks from the plastic pet bottle collected in and around the campus.

2. Liquid Waste Management: The waste water mixed with chemicals from laboratories passes through concealed pipe line into soak pit. All waste water lines from toilets and drains etc., are connected with municipal drainage system.

3. E-waste Management - E-waste generated in the campus is very less in quantity. Awareness programmes regarding E-waste Management are conducted regularly. The E-waste and defective item from computer laboratory are stored properly. The institution has decided to contact approved E-waste management and disposal facility in order to dispose E-waste in scientific manner. In this connection, college has collaborated with All India Women’s Conference (AIWC), Darjeeling which again are in Collaboration with HULLADEK (Hungry for waste) to collect E-waste from the campus and its stakeholders bi-annually. Hulladek, Kolkata, a CPCB certified vendors collect E-waste from the campus and send it to Kolkata for safe recycling and disposal of E-waste.

4. Hazardous chemicals and radioactive waste Management-The college laboratories does not use very hazardous Chemicals and radioactive elements and hence the waste from the laboratories are negligible. Other less hazardous chemicals waste is disposed under the supervision of the teachers of the concerned department.

1. Management of Various types of degradable and non- degradable waste

- (a) The Darjeeling Municipality is the competent authority to dispose Degradable and non degradable waste of the college. Certificate from the competent authority is attached here with.



DARJEELING MUNICIPALITY
1, Ladenla Road, Darjeeling
Dist. Darjeeling, Pin 734101
Email : darjeeling_municipality1850@gmail.com

14.08.2024

TO WHOM IT MAY CONCERN

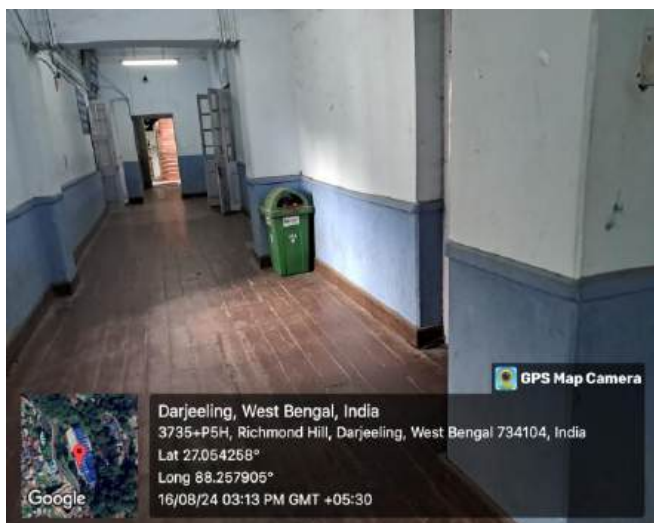
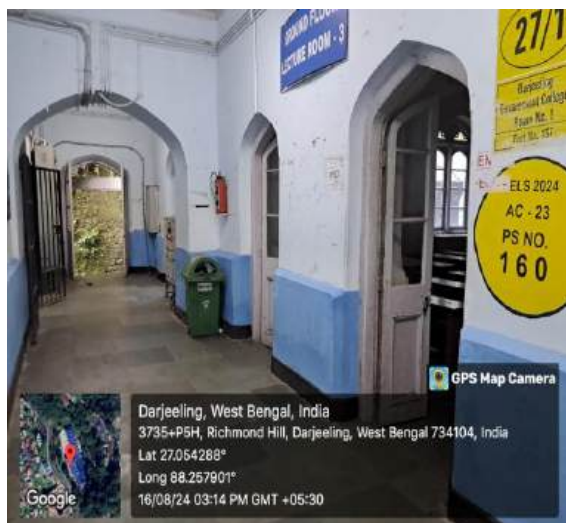
This is to certify that Darjeeling Government College falls within the jurisdiction of Darjeeling Municipality Administration. The Darjeeling Municipality waste management department collects the segregated waste (Degradable and Non-Degradable waste) of the college regularly, from the college premises, through waste carrier trucks and management system.

A handwritten signature in blue ink, appearing to be "K. K. K.", is written over a circular official stamp.

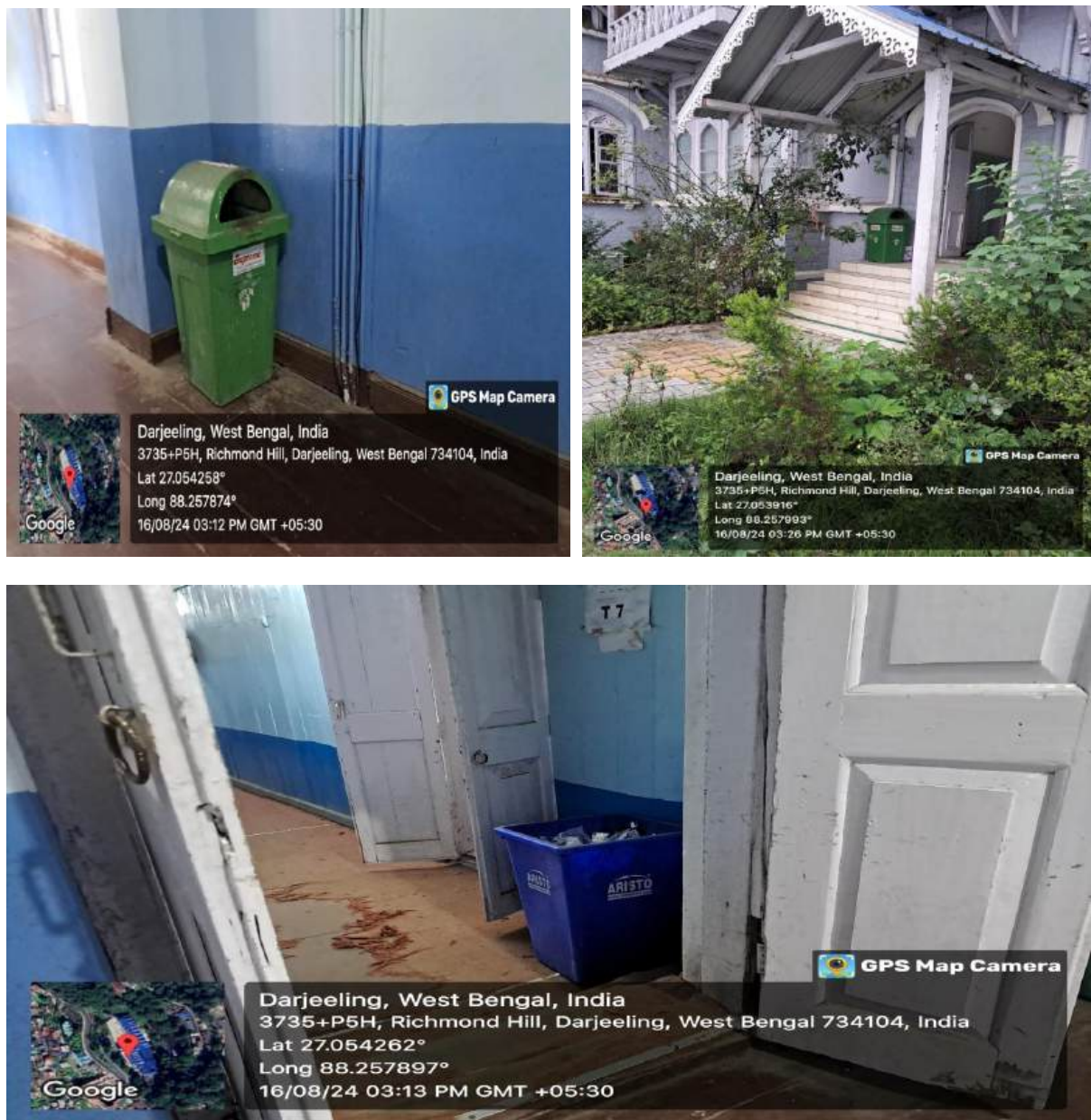
Chairman,
Darjeeling Municipality,
Darjeeling.
Chairman
Darjeeling Municipality
Darjeeling

Certificate from Municipality, Darjeeling, regarding waste management of the college

- (b) The college has placed blue and green dustbin at various places to segregate degradable and non- degradable wastes (latest geo tagged photographs attached).



Dustbins placed at different locations



Green and Blue Dustbins for waste segregation at various locations within and outside the college building.

- (c) The unwanted plants and pruned leaves which are naturally degradable which are collected during cleaning drives are collected and deposited in the Compost pit for compost manure used to sustain greenery and garden of the college (latest geo tagged photographs attached).





Compost pit for making compost manure from unwanted plants during cleaning drives and used for garden greenery and sustenance of college garden and herbal garden.

(d) Electronic waste are stored properly (latest geo tagged photographs attached)



e-waste stored properly.

